

# LMC500 Series Upright Microscope



Version 1

## Brochure

## INTRODUCTION

Introducing the LMC500 Series Biological Microscope: Your Window to the Microscopic World. The LMC500 Series Biological Microscope is designed to provide you with easy operation and crystal-clear imaging, making it an indispensable tool for biological research, medical diagnostics, and educational purposes. Whether you're a seasoned professional or a curious student, this microscope offers user-friendly features and superior optics to enhance your microscopy experience.



### Key Features:

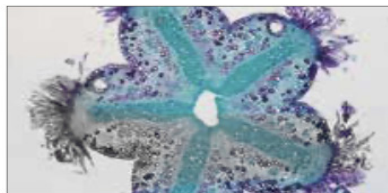
**Ease of Operation:** The LMC500 Series is engineered with simplicity in mind. Its intuitive design and ergonomic controls ensure smooth and effortless operation, allowing users of all skill levels to focus on their observations without distractions.

**Clear Imaging:** Equipped with high-quality optical components, including precision lenses and advanced illumination systems, this microscope delivers crisp, clear images with exceptional contrast and resolution. Whether you're examining cells, tissues, or microorganisms, you can trust the LMC500 Series to provide accurate and detailed visual information.

**Versatile Applications:** From biological research to clinical diagnostics and educational demonstrations, the LMC500 Series is suitable for a wide range of applications. Whether you're studying live specimens or prepared slides, this microscope offers versatility and performance to meet your specific needs.

**Durable Construction:** Built to withstand daily use in demanding environments, the LMC500 Series features a rugged construction and reliable mechanical components. Its robust design ensures long-term durability and consistent performance, making it a reliable companion for your microscopy endeavors.

**Optional Accessories:** Customize your microscopy setup with a range of optional accessories, including different objective lenses, eyepieces, and imaging attachments. Whether you need enhanced magnification, specialized illumination, or digital imaging capabilities, the LMC500 Series offers flexibility to adapt to your evolving requirements.



### Micro world, New vision

Outstanding image quality, is helpful for students to understand the main points in teaching, is effective to arouse the initiative and the ability of autonomous learning.

With PL10X/18mm wide field plan eyepiece, LMC500 creates more comfortable observation experience. Combined with optional plan achromatic objectives, LMC500 is able to provide a sharp image in natural color, immersive yourself to the micro world and satisfy your desire to explore the unknown.

## Rechargeable LED illumination system

Built-in rechargeable module in the base can be charged when the microscope is working. With long battery life, E3 is able to work when there is no alternate current, is available to make experiment any time and any where.

Charging indicator on the right side of the base, is clear to know the power usage.



Built-in rechargeable module



Charging indicator



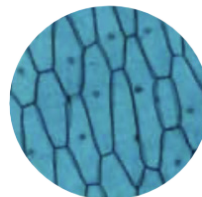
## Clear the messy wire harness

Empty space in frame back is designed to store the power line. It is helpful to clean the working environment and effective to avoid the accident when moving the microscope.

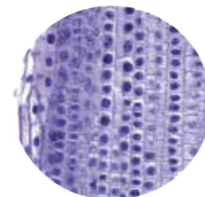
Adopted USB power line, LMC500 is able to be powered by computer or portable power source, more convenient and flexible.



## To explore something new



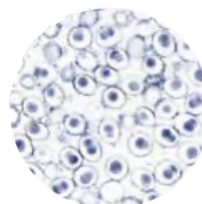
Onion epidermal



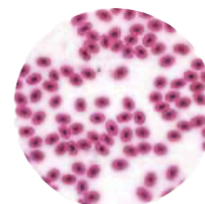
Plant rhizome



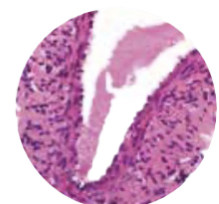
Bee hind leg



Mitosis



Frog blood

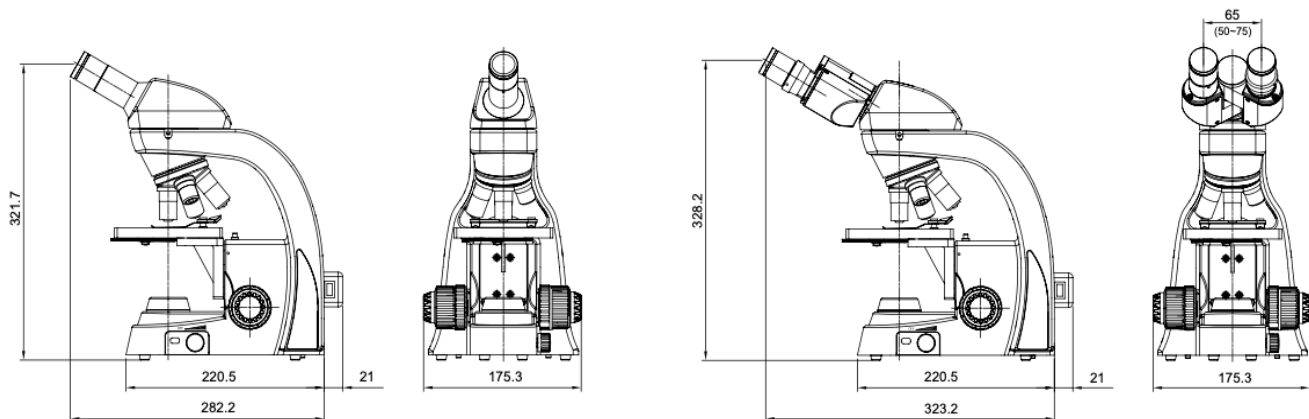


Pathological tissue



# STANDARD

| MODEL NUMBER         | LMC500-BF1  | LMC500-BF3  |
|----------------------|---|---|
| VIEWING HEAD         | 30° inclined, monocular viewing head,with eyepiece locking mechanism (cross-screw)  | 30°inclined,gemel trinocular viewing head,23.2 viewing tube diameter,with eyepiece locking mechanism(Hexagon socket button head screws);left eyepiece diopter adjustment: +/-5; interpupillary distance adjustable:47mm 75mm30°splitting ratio R:T=5:5  |
| OBJECTIVES           | Achromatic objective 4X/10X/40X.  | Achromatic objectives 4X/10X/20X/40X/100X   |
| EYEPIECES            | Wide field plan eyepiece PL10X/18mm.  | Wide field plan eyepiece PL10X/18mm.  |
| CONDENSER            | Single condenser,N.A.=0.65; five hole turntable aperture.   | Abbe condenser,N.A.=1.25;with adjustable aperture and filter bracket  |
| FRAME & ILLUMINATION | Low position Coaxial coarse and fine adjustment,range13mm(optional mechanical stage focusing stroke 7mm), precision: 0.004mm, with coarse adjustment stop and tightness adjustment, 0.2W LED(color temperature 5700-6500K) intensity adjustable, internal 3 pieces rechargeable batteries, external wide voltage battery charger,100V-240V_ AC input, DC5V 1A output. | Low position Coaxial coarse and fine adjustment,range13mm(optional mechanical stage focusing stroke 7mm), precision: 0.004mm, with coarse adjustment stop and tightness adjustment, 0.2W LED(color temperature 5700-6500K) intensity adjustable, internal 3 pieces rechargeable batteries, external wide voltage battery charger,100V-240V_ AC input, DC5V 1A output. |
| STAGE                | Fixed Stage,110x120mm,Press type mechanism tablet clamp   | Double layer mechanical stage, 115x125mm.   |
| NOSEPIECE            | Quadruple   | Quadruple   |





---

LAXCO, Inc.  
18303 Bothell-Everett Hwy  
Suite 140  
Mill Creek, WA 98012  
sales@laxco.com  
www.laxcoinc.com

Contact us:  
425-686-3081  
sales@laxcoinc.com

LMC-MKT-DOC-1700128